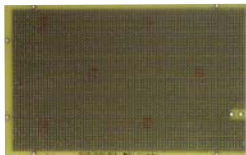
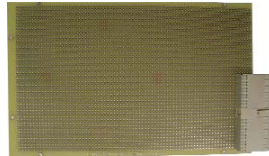


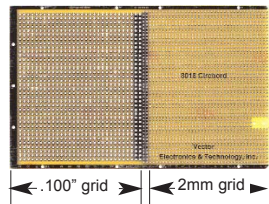
## 2 MM (Hard Metric) Grid Development Boards



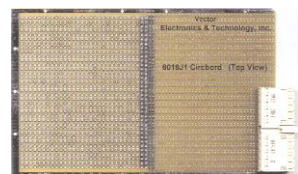
**8017 2mm grid, Pad-Per-Hole**  
 Pattern Q in 3U Eurocard size (3.94" x 6.3"). .025" holes plated thru with annular ring.  
 Accepts cPCI 2mm J1 (25 rows & J2 (22 row) connectors on edge. Material: FR4  
 Press-in Solder Terminals: K36



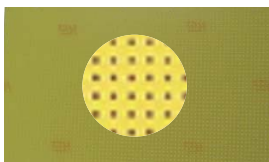
**8017J1 2mm grid, Pad-Per-Hole w/J1 Connector**  
 Same as 8017 but with cPCI 2mm, J1 25 row connector installed



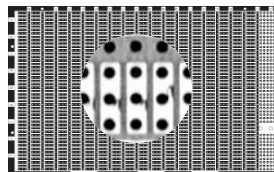
**8018 2mm/.100" Pad-Per-Hole 2-Grid Combo**  
 Patterns P & Q in 3U Eurocard size (3.94"x6.3") 0.25" and .042" holes plated thru with annular ring.  
 Accepts cPCI 2mm J1 (25 row) & J2 (22 row) on edge. Material: Fr-4  
 Press-in Solder Terminals: K36 (.025" holes)  
 T42-1, T46 (.042" holes)



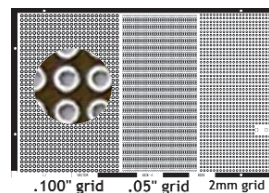
**8018J1 2mm/.100" Pad-Per-Hole Grid Combo w/J1**  
 Same as 8018 but with cPCI 2mm J1 25 row connector installed.



**47Q78WE 2mm Grid, holes only, no Copper**  
 Accepts cPCI 2mm J1 (25 row) & J2 (22 row) on edge. Material: FR-4



**8024 2mm Grid, Three-Hole Solder Pads**  
 3U Eurocard size (3.94" x 6.3"). 0.25" holes plated thru with annular ring.  
 Accepts cPCI 2mm J1 (25 row) & J2 (22 row) on edge. Material: FR-4  
 Press-in Solder Terminal: K36



**8028 2mm/.100"/.050" Pad-Per-Hole 3-Grid Combo**  
 Patterns P, M & Q in 3U Eurocard size (3.94" c 6.3") 0.25" & .042" holes plated thru with annular rings.  
 Accepts cPCI 2mm J1 (25 row) & J2 (22 row) on edge. Material: FR-4  
 Press-in Solder Terminals: K36 (.025" holes)  
 T42-1, T46 (.042" holes)

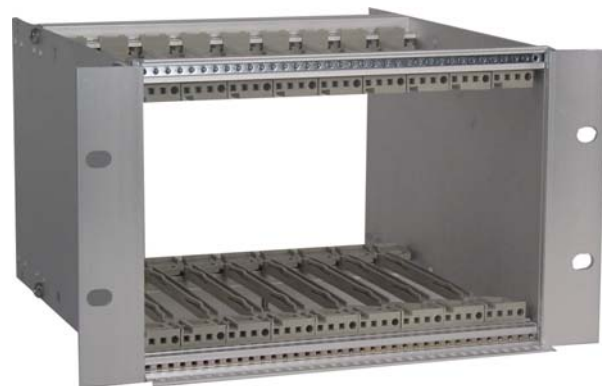
### Features:

- 3UX160MM Eurocard size (3.94"x6.3") fit in Vector 3U DIN Subracks
- 2mm Connectors can be installed
- Copper plated thru holes, solder plated
- Grid Combination Boards

Several versions of 2MM grid / combination grid boards are manufactured in DIN Eurocard 3U standard. These utility boards become cPCI or PXI usable by installation of a J1 'Type A' or J2 'Type AB' connector onto the board end. Vector K36C series tin plated pins may be used for wiring of .025" diameter holes and a variety of solder or wire-wrap pins and terminals are available for .042" diameter holes.

All boards are made of FR-4 Epoxy Glass, UL94 V-O, MIL STD P13949, Type GF. All boards are .062" (1/16" or 0.6mm) thick.

All boards described here fit into our VectorPak CCA26 or CCK 26 series of 3U subracks



CCA26-36-00 with CG3 Card Guides Installed

### PATTERN DEFINITION

